



In this issue:

RMC^{3TM} is the remarkable Rotational Molding Compound

Benefits of RMC^{3TM}

Try permanent Mold In GraphicsTM and Mold On Graphics[®]

Branded for life.

We don't just say it.
We deliver.

Permanent Mold In GraphicsTM
and Mold On Graphics[®] from
Mold In Graphic Systems[®]

Helping our customers build
better products and stronger
brands for 25 years.

How do rotomolders create solid additions to hollow parts, solve molding problems, and reduce scrap? They choose RMC^{3TM}.

RMC^{3TM}, Rotational Molding Compound, is the remarkable polymer compound invented in 2002 by Mold In Graphic Systems[®]. RMC^{3TM}'s motto: "Just because it's roto-molded, doesn't mean it has to be hollow."

This incredible compound lets you create solid additions to hollow parts, solve molding problems, and reduce scrap.

Potential uses for RMC^{3TM}:

- Immediate correction of flow issues
- Perfect, solid threads
- Mounting tabs
- Flanges
- Solid molded-in feet
- Internal bosses
- Reinforced hinges and hinge pins
- Solid molded-in handles
- And anything else you can imagine!



This 25-year Mold In Graphic Systems[®] Anniversary logo lets you imagine the versatility of RMC^{3TM}.

"This material concept, RMC^{3TM}, from Mold In Graphic Systems[®] is revolutionary. I am excited about the opportunities that it provides. I can offer my customers unheard of features in their new molds. I can also advise them how to resolve many of the issues with their on-going production concerns. I have never seen anything like this and I plan to educate the product designers that I work with about these new capabilities."



John Hammond, Mainland Products, Inc., California Cast and Fabricated Aluminum Mold Maker

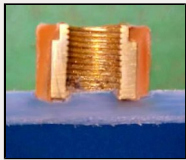
"The knit, or weld lines where the RMC^{3TM} meets the standard rotomolding resin, appear to be very solid within the rotomolded parts that I have witnessed being manufactured."

Phil Dodge, Equistar Chemicals LP, Ohio



Is RMC^{3™} in your toolbox?

RMC^{3™} Compound from Mold In Graphic Systems® is a pliable polyethylene material which can be easily packed into the mold to create solid areas or unique design features. In its raw form, RMC^{3™} has a dough-like consistency with the basic look and feel of industrial putty.



"Our client asked for a plastic threaded rod welded into their duct, and we feared for the repeatability

of the normal roto process. This insert regulates the air speed inside the part, so no disturbance could be induced to the flow. RMC^{3™} allows us to incorporate the insert during the process, making it much more simple and reliable."

Marco Antonio de Lima Nunes ,
Máquinas Agrícolas Jacto S.A.,
Brazil



RMC^{3™} will not melt and flow inside the mold during the heating cycle – like a typical commodity polyethylene. This unique polyethylene material will cure solid during the normal rotomolding process, becoming completely integrated into the part, without any change being made to the molding cycle.

RMC^{3™} eliminates many of the constraints associated with the rotomolding process and opens up many exciting possibilities for the designer, allowing previously unheard-of features to be designed into the product. Instead of making the design fit the process, the process can now be made to fit the design.

RMC^{3™} can also be used to rectify many of the typical problems encountered by molders on a daily basis. Every molder should consider keeping a carton of RMC^{3™} in their tool box. Problematic flow issues in existing mold designs can be immediately overcome by making that area in the part solid or thicker than is normally specified.

Very often it is only one small area in a part that is causing a problem due to poor internal flow or insufficient heat in that area. Rectifying the problem (for example, changing the rotation ratios) can often lead to other problems, such as thinning, elsewhere in the part. By inserting a small quantity of RMC^{3™}, the problem is instantly eliminated – without changing anything.

RMC^{3™} is available in Black or Natural colors in a 10 lb (4.55 kg) carton. Custom colors are available. Please contact us for further technical information or product data.

All products shown use RMC^{3™}
from Mold In Graphic Systems®.

Make your rotomolded products extraordinary with RMC^{3™} and Mold In Graphic Systems®.



before."

"RMC^{3™} represents a major design and engineering advancement for rotationally molded products; allowing me, as a rotational molder, to mold in features never possible

Bill Michael, Michael Brothers, Inc., Arizona

Types of Mold In Graphic Systems®

Permanent Graphics:

- Name & Logo
- Safety / Warning Graphics
- Private Labels
- Second Language Graphics
- Decorative Design
- Bar Coding & Serial Numbers
- Fluid Level Measurement
- Conductive Graphics
- Custom Graphics



Mold In Graphic Systems® offers a complete line of Enhancement Products which help make the molding process easier and your products better. For more information, please visit our web site at www.moldinggraphics.com.

Mold In Graphic Systems®. Helping our customers build better products and stronger brands for 25 years.



Contact our Sales Management team today.



Scott Saxman (US)
1.928.634.8838



Peter Clark (UK)
+44 01287 623332



Nick Moldan (France)
+33 (0)4 7845 7304

©2008 Copyright. All Rights Reserved. Mold In Graphic Systems®.
Please call Mold In Graphic Systems® Sales at 1-928-634-8838 or visit our web site at www.moldinggraphics.com for more information on our products and services.
[To unsubscribe, please click here](#)